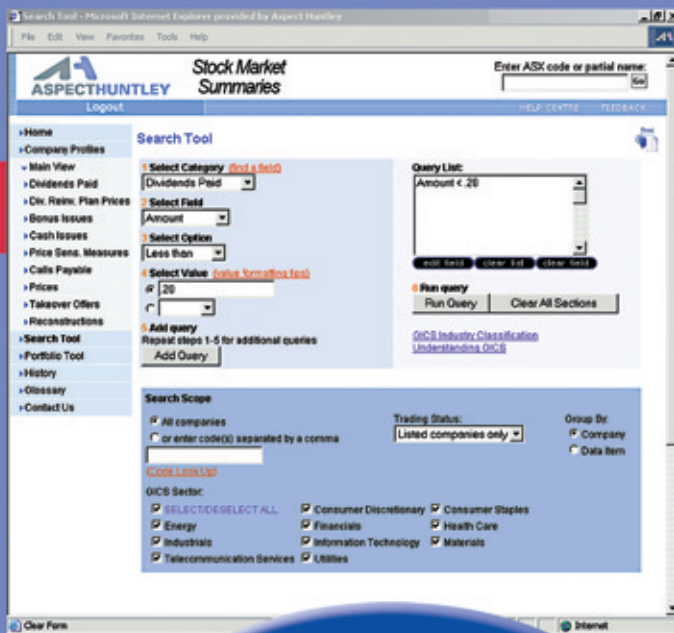


Would you like to save time and money in your business?

- Improve your workflow
- Increase efficiency
- Everything at your fingertips – not taking up room in an overcrowded bookshelf!



**Every detail
on every listed
company**

Aspect Huntley's Annual Stockmarket Summaries is the essential Share Portfolio Evaluation and Taxation Guide.



Would you like a fast way to access CGT and Tax information on every listed company?

Annual Stockmarket Summaries

Instant access to:

- Dividends Paid
- Dividend Reinvestment Plan Prices
- Dividend Imputation
- Share Splits
- Cash Issues
- Bonus Issues
- Calls Payable
- Rights Trading Prices
- Takeover Offers
- Foreign Companies
- Company Reconstructions
- Delistings and Suspensions
- New GICS Classifications

Now online so you have
everything at your fingertips

Aspect Huntley Pty Limited
ABN 87 104 232 911

Level 10
Exchange Centre
20 Bridge Street
Sydney NSW 2000

www.aspecthuntley.com.au

**Call 1800 03 44 55
and order today**

Annual Stockmarket Summaries online lets you work *smarter*

CGT returns made easy – making your tax practice smarter, more profitable

| BHP BHP BILLITON LIMITED | | | | | | | | | | | |
|--------------------------|----------------------|-------------------|-------------------------------------|---------------|---------------|----------------|---------------|--|--|--|--|
| SECURITIES ON ISSUE | | | | | | | | | | | |
| SECURITY CODE | SECURITY DESCRIPTION | SECURITY TYPE | GICS CLASSIFICATION | HOME EXCHANGE | TOTAL ISSUE | ISIN | CURRENCY CODE | | | | |
| BHP | ORDINARY | ORDINARY | 1010000 Materials - Metals & Mining | Milbourne | 3,718,943,849 | AU000000BHP4 | AUD | | | | |
| BHPA1 | \$1.24 PD VAR LFD EM | EMPLOYEE ORDINARY | 1010000 Materials - Metals & Mining | Milbourne | 481,800 | AU000000BHPA1 | AUD | | | | |
| BHPAM | EMP OPT VARIOUS | EMPLOYEE OPTIONS | 1010000 Materials - Metals & Mining | Milbourne | 17,746,809 | AU000000BHPAM7 | AUD | | | | |
| BHPAO | PERFORMANCE VARIO | EMPLOYEE OPTIONS | 1010000 Materials - Metals & Mining | Milbourne | 4,082,483 | AU000000BHPAO3 | AUD | | | | |
| BHPAQ | PERFORMANCE | ORDINARY | 1010000 Materials - Metals & Mining | Milbourne | 18,174,878 | AU000000BHPAQ8 | AUD | | | | |
| BHPAN | DEFERRED | ORDINARY | 1010000 Materials - Metals & Mining | Milbourne | 2,393,583 | AU000000BHPAN4 | AUD | | | | |
| BHPAU | OPTION VARIOUS | OPTIONS | 1010000 Materials - Metals & Mining | Milbourne | 1,398,448 | AU000000BHPAU3 | AUD | | | | |

| DIVIDENDS PAID | | | | | | | | | | | |
|----------------|------------|-------------|--------------|-----------------|----------|----------------|---------------|---------------|---|--|--|
| SECURITY CODE | EX DATE | BOOKS CLOSE | PAYABLE DATE | AMOUNT IN CENTS | DIV TYPE | FRANKING RATE% | PERIOD ENDING | PERIOD MONTHS | COMMENTS | | |
| BHP | 6/06/2003 | 13/06/2003 | 2/07/2003 | 11.8813 | F | 100 | 31/12/2002 | 6 | US \$0.075 PER SHARE 11.8813C FRANKED@30% | | |
| BHP | 10/11/2003 | 14/11/2003 | 3/12/2003 | 11.41 | I | 100 | 30/09/2003 | 6 | US \$0.08 PER SHARE 11.41C FRANKED @ 30% | | |
| BHP | 8/04/2004 | 16/04/2004 | 5/05/2004 | 11.3376 | I | 100 | 31/12/2003 | 6 | US \$ 8.5C 11.337627C FR @30% 2ND INTERIM | | |

| DIVIDEND IMPUTATION | | | | | | | | | | | |
|--|-----------|------|------|------|------|------|-----|-------|------|--|--|
| EFFECTIVE DIV. YIELD (%) AT VARIOUS PERSONAL INCOME TAX LEVELS | | | | | | | | | | | |
| TAX REBATE (%) AT VARIOUS PERSONAL INCOME TAX LEVELS | | | | | | | | | | | |
| DPS LAST 12 MONTHS | | | | | | | | | | | |
| PRICE | DIV YIELD | 17% | 30% | 42% | 47% | 17% | 30% | 42% | 47% | | |
| 34.62 | 12.53 | 2.76 | 3.27 | 2.76 | 2.28 | 6.43 | 0 | -5.93 | -8.4 | | |

| SHARE PRICES AS AT CLOSE OF TRADE 31 DECEMBER, 2003 | | | | | | | | | | | | SHARE PRICES AS AT CLOSE OF TRADE 30 JUNE, 2004 | | | | | | | | | | | |
|---|-----------------|-----|-----|-----|------|-----|------|----------|--------|---------------|-----------------|---|-----|-----|------|-----|------|----------|--------|--|--|--|--|
| SECURITY CODE | SECURITY SERIES | BD | ASK | BID | HIGH | LOW | LAST | VAR DATE | VOLUME | SECURITY CODE | SECURITY SERIES | BD | ASK | BID | HIGH | LOW | LAST | VAR DATE | VOLUME | | | | |
| BHP | *BHPJF | 120 | 120 | 120 | 120 | 120 | 120 | 7 | 5.24 | BHP | *BHPJF | 120 | 124 | 124 | 124 | 124 | 124 | 16 | 19.84 | | | | |
| BHP | EMO | 100 | 100 | 100 | 100 | 100 | 100 | 11 | 1.1 | BHP | EMO | 100 | 107 | 107 | 107 | 107 | 107 | 11 | 1.2 | | | | |
| BHP | EMF | 100 | 100 | 100 | 100 | 100 | 100 | 11 | 1.1 | BHP | EMF | 100 | 107 | 107 | 107 | 107 | 107 | 11 | 1.2 | | | | |
| BHP | EMG | 100 | 100 | 100 | 100 | 100 | 100 | 11 | 1.1 | BHP | EMG | 100 | 107 | 107 | 107 | 107 | 107 | 11 | 1.2 | | | | |
| BHP | EMH | 100 | 100 | 100 | 100 | 100 | 100 | 11 | 1.1 | BHP | EMH | 100 | 107 | 107 | 107 | 107 | 107 | 11 | 1.2 | | | | |
| BHP | EMJ | 100 | 100 | 100 | 100 | 100 | 100 | 11 | 1.1 | BHP | EMJ | 100 | 107 | 107 | 107 | 107 | 107 | 11 | 1.2 | | | | |
| BHP | EMK | 100 | 100 | 100 | 100 | 100 | 100 | 11 | 1.1 | BHP | EMK | 100 | 107 | 107 | 107 | 107 | 107 | 11 | 1.2 | | | | |
| BHP | EML | 100 | 100 | 100 | 100 | 100 | 100 | 11 | 1.1 | BHP | EML | 100 | 107 | 107 | 107 | 107 | 107 | 11 | 1.2 | | | | |
| BHP | EMM | 100 | 100 | 100 | 100 | 100 | 100 | 11 | 1.1 | BHP | EMM | 100 | 107 | 107 | 107 | 107 | 107 | 11 | 1.2 | | | | |
| BHP | EMN | 100 | 100 | 100 | 100 | 100 | 100 | 11 | 1.1 | BHP | EMN | 100 | 107 | 107 | 107 | 107 | 107 | 11 | 1.2 | | | | |
| BHP | EMO | 100 | 100 | 100 | 100 | 100 | 100 | 11 | 1.1 | BHP | EMO | 100 | 107 | 107 | 107 | 107 | 107 | 11 | 1.2 | | | | |
| BHP | EMJ | 100 | 100 | 100 | 100 | 100 | 100 | 11 | 1.1 | BHP | EMJ | 100 | 107 | 107 | 107 | 107 | 107 | 11 | 1.2 | | | | |
| BHP | EMK | 100 | 100 | 100 | 100 | 100 | 100 | 11 | 1.1 | BHP | EMK | 100 | 107 | 107 | 107 | 107 | 107 | 11 | 1.2 | | | | |
| BHP | EML | 100 | 100 | 100 | 100 | 100 | 100 | 11 | 1.1 | BHP | EML | 100 | 107 | 107 | 107 | 107 | 107 | 11 | 1.2 | | | | |
| BHP | EMM | 100 | 100 | 100 | 100 | 100 | 100 | 11 | 1.1 | BHP | EMM | 100 | 107 | 107 | 107 | 107 | 107 | 11 | 1.2 | | | | |
| BHP | EMN | 100 | 100 | 100 | 100 | 100 | 100 | 11 | 1.1 | BHP | EMN | 100 | 107 | 107 | 107 | 107 | 107 | 11 | 1.2 | | | | |
| BHP | EMO | 100 | 100 | 100 | 100 | 100 | 100 | 11 | 1.1 | BHP | EMO | 100 | 107 | 107 | 107 | 107 | 107 | 11 | 1.2 | | | | |
| BHP | EMJ | 100 | 100 | 100 | 100 | 100 | 100 | 11 | 1.1 | BHP | EMJ | 100 | 107 | 107 | 107 | 107 | 107 | 11 | 1.2 | | | | |
| BHP | EMK | 100 | 100 | 100 | 100 | 100 | 100 | 11 | 1.1 | BHP | EMK | 100 | 107 | 107 | 107 | 107 | 107 | 11 | 1.2 | | | | |
| BHP | EML | 100 | 100 | 100 | 100 | 100 | 100 | 11 | 1.1 | BHP | EML | 100 | 107 | 107 | 107 | 107 | 107 | 11 | 1.2 | | | | |
| BHP | EMM | 100 | 100 | 100 | 100 | 100 | 100 | 11 | 1.1 | BHP | EMM | 100 | 107 | 107 | 107 | 107 | 107 | 11 | 1.2 | | | | |
| BHP | EMN | 100 | 100 | 100 | 100 | 100 | 100 | 11 | 1.1 | BHP | EMN | 100 | 107 | 107 | 107 | 107 | 107 | 11 | 1.2 | | | | |
| BHP | EMO | 100 | 100 | 100 | 100 | 100 | 100 | 11 | 1.1 | BHP | EMO | 100 | 107 | 107 | 107 | 107 | 107 | 11 | 1.2 | | | | |
| BHP | EMJ | 100 | 100 | 100 | 100 | 100 | 100 | 11 | 1.1 | BHP | EMJ | 100 | 107 | 107 | 107 | 107 | 107 | 11 | 1.2 | | | | |
| BHP | EMK | 100 | 100 | 100 | 100 | 100 | 100 | 11 | 1.1 | BHP | EMK | 100 | 107 | 107 | 107 | 107 | 107 | 11 | 1.2 | | | | |
| BHP | EML | 100 | 100 | 100 | 100 | 100 | 100 | 11 | 1.1 | BHP | EML | 100 | 107 | 107 | 107 | 107 | 107 | 11 | 1.2 | | | | |
| BHP | EMM | 100 | 100 | 100 | 100 | 100 | 100 | 11 | 1.1 | BHP | EMM | 100 | 107 | 107 | 107 | 107 | 107 | 11 | 1.2 | | | | |
| BHP | EMN | 100 | 100 | 100 | 100 | 100 | 100 | 11 | 1.1 | BHP | EMN | 100 | 107 | 107 | 107 | 107 | 107 | 11 | 1.2 | | | | |
| BHP | EMO | 100 | 100 | 100 | 100 | 100 | 100 | 11 | 1.1 | BHP | EMO | 100 | 107 | 107 | 107 | 107 | 107 | 11 | 1.2 | | | | |
| BHP | EMJ | 100 | 100 | 100 | 100 | 100 | 100 | 11 | 1.1 | BHP | EMJ | 100 | 107 | 107 | 107 | 107 | 107 | 11 | 1.2 | | | | |
| BHP | EMK | 100 | 100 | 100 | 100 | 100 | 100 | 11 | 1.1 | BHP | EMK | 100 | 107 | 107 | 107 | 107 | 107 | 11 | 1.2 | | | | |
| BHP | EML | 100 | 100 | 100 | 100 | 100 | 100 | 11 | 1.1 | BHP | EML | 100 | 107 | 107 | 107 | 107 | 107 | 11 | 1.2 | | | | |
| BHP | EMM | 100 | 100 | 100 | 100 | 100 | 100 | 11 | 1.1 | BHP | EMM | 100 | 107 | 107 | 107 | 107 | 107 | 11 | 1.2 | | | | |
| BHP | EMN | 100 | 100 | 100 | 100 | 100 | 100 | 11 | 1.1 | BHP | EMN | 100 | 107 | 107 | 107 | 107 | 107 | 11 | 1.2 | | | | |
| BHP | EMO | 100 | 100 | 100 | 100 | 100 | 100 | 11 | 1.1 | BHP | EMO | 100 | 107 | 107 | 107 | 107 | 107 | 11 | 1.2 | | | | |
| BHP | EMJ | 100 | 100 | 100 | 100 | 100 | 100 | 11 | 1.1 | BHP | EMJ | 100 | 107 | 107 | 107 | 107 | 107 | 11 | 1.2 | | | | |
| BHP | EMK | 100 | 100 | 100 | 100 | 100 | 100 | 11 | 1.1 | BHP | EMK | 100 | 107 | 107 | 107 | 107 | 107 | 11 | 1.2 | | | | |
| BHP | EML | 100 | 100 | 100 | 100 | 100 | 100 | 11 | 1.1 | BHP | EML | 100 | 107 | 107 | 107 | 107 | 107 | 11 | 1.2 | | | | |
| BHP | EMM | 100 | 100 | 100 | 100 | 100 | 100 | 11 | 1.1 | BHP | EMM | 100 | 107 | 107 | 107 | 107 | 107 | 11 | 1.2 | | | | |
| BHP | EMN | 100 | 100 | 100 | 100 | 100 | 100 | 11 | 1.1 | BHP | EMN | 100 | 107 | 107 | 107 | 107 | 107 | 11 | 1.2 | | | | |
| BHP | EMO | 100 | 100 | 100 | 100 | 100 | 100 | 11 | 1.1 | BHP | EMO | 100 | 107 | 107 | 107 | 107 | 107 | 11 | 1.2 | | | | |
| BHP | EMJ | 100 | 100 | 100 | 100 | 100 | 100 | 11 | 1.1 | BHP | EMJ | 100 | 107 | 107 | 107 | 107 | 107 | 11 | 1.2 | | | | |
| BHP | EMK | 100 | 100 | 100 | 100 | 100 | 100 | 11 | 1.1 | BHP | EMK | 100 | 107 | 107 | 107 | 107 | 107 | 11 | 1.2 | | | | |
| BHP | EML | 100 | 100 | 100 | 100 | 100 | 100 | 11 | 1.1 | BHP | EML | 100 | 107 | 107 | 107 | 107 | 107 | 11 | 1.2 | | | | |
| BHP | EMM | 100 | 100 | 100 | 100 | 100 | 100 | 11 | 1.1 | BHP | EMM | 100 | 107 | 107 | 107 | 107 | 107 | 11 | 1.2 | | | | |
| BHP | EMN | 100 | 100 | 100 | 100 | 100 | 100 | 11 | 1.1 | BHP | EMN | 100 | 107 | 107 | 107 | 107 | 107 | 11 | 1.2 | | | | |
| BHP | EMO | 100 | 100 | 100 | 100 | 100 | 100 | 11 | 1.1 | BHP | EMO | 100 | 107 | 107 | 107 | 107 | 107 | 11 | 1.2 | | | | |
| BHP | EMJ | 100 | 100 | 100 | 100 | 100 | 100 | 11 | 1.1 | BHP | EMJ | 100 | 107 | 107 | 107 | 107 | 107 | 11 | 1.2 | | | | |
| BHP | EMK | 100 | 100 | 100 | 100 | 100 | 100 | 11 | 1.1 | BHP | EMK | 100 | 107 | 107 | 107 | 107 | 107 | 11 | 1.2 | | | | |
| BHP | EML | 100 | 100 | 100 | 100 | 100 | 100 | 11 | 1.1 | BHP | EML | 100 | 107 | 107 | 107 | 107 | 107 | 11 | 1.2 | | | | |
| BHP | EMM | 100 | 100 | 100 | 100 | 100 | 100 | 11 | 1.1 | BHP | EMM | 100 | 107 | 107 | 107 | 107 | 107 | 11 | 1.2 | | | | |
| BHP | EMN | 100 | 100 | 100 | 100 | 100 | 100 | 11 | 1.1 | BHP | EMN | 100 | 107 | 107 | 107 | 107 | 107 | 11 | 1.2 | | | | |
| BHP | EMO | 100 | 100 | 100 | 100 | 100 | 100 | 11 | 1.1 | BHP | EMO | 100 | 107 | 107 | 107 | 107 | 107 | 11 | 1.2 | | | | |
| BHP | EMJ | 100 | 100 | 100 | 100 | 100 | 100 | 11 | 1.1 | BHP | EMJ | 100 | 107 | 107 | 107 | 107 | 107 | 11 | 1.2 | | | | |
| BHP | EMK | 100 | 100 | 100 | 100 | 100 | 100 | 11 | 1.1 | BHP | EMK | 100 | 107 | 107 | 107 | 107 | 107 | 11 | 1.2 | | | | |
| BHP | EML | 100 | 100 | 100 | 100 | 100 | 100 | 11 | 1.1 | BHP | EML | 100 | 107 | 107 | 107 | 107 | 107 | 11 | 1.2 | | | | |
| BHP | EMM | 100 | 100 | 100 | 100 | 100 | 100 | 11 | 1.1 | BHP | EMM | 100 | 1 | | | | | | | | | | |